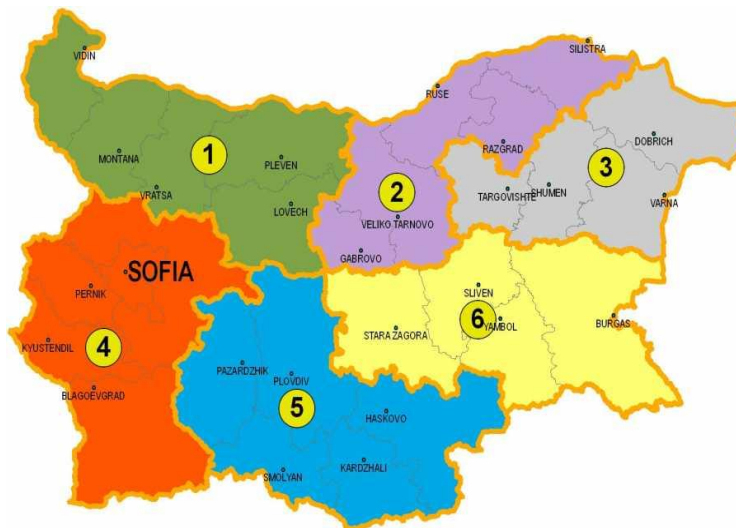


# ADULT LEARNING AT REGIONAL LEVEL: PRACTICES AND POLICIES IN BURGAS DISTRICT BULGARIA

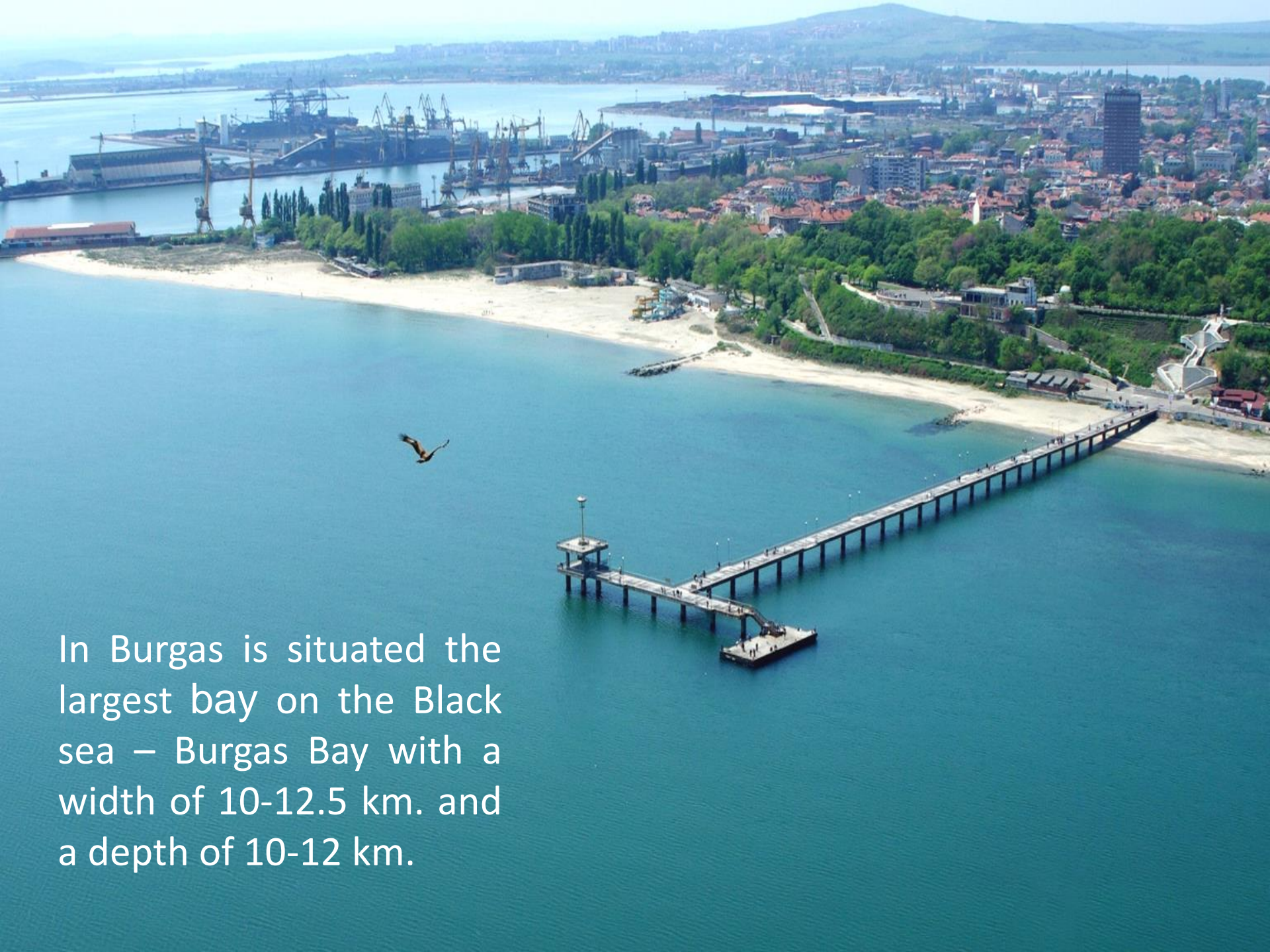


September 16, 2020

**Burgas region** is located in the southeastern part of Bulgaria on a territory of 7748.067 square kilometers (6.9% of the area of Bulgaria) and is the second biggest region in Bulgaria. To the east there is a wide area of Black sea bordering the region /224 km. /, to the south it is bordered by Turkey.







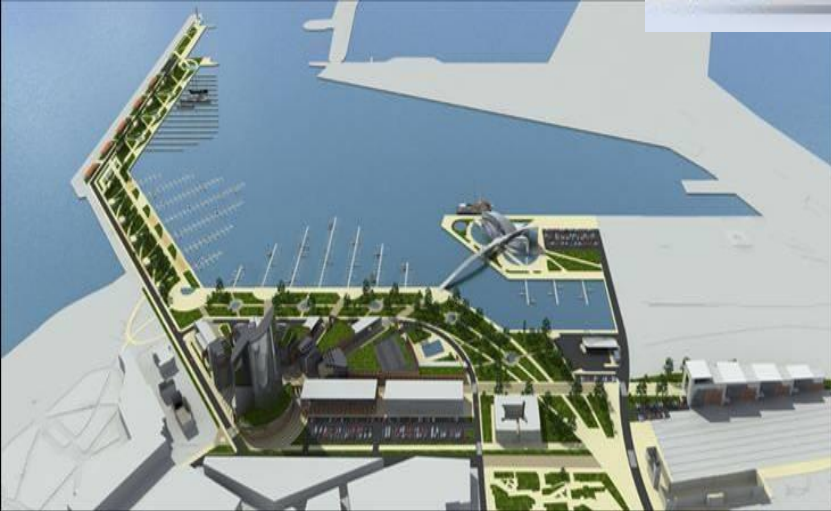
In Burgas is situated the largest bay on the Black sea – Burgas Bay with a width of 10-12.5 km. and a depth of 10-12 km.



- The geostrategic position of the region is a factor of national importance. Here are crossed economic and political interests between Europe - Middle East - Asia, as well as Russia- Ukraine- Belarus and Western Europe.
- The border area of the Black sea increases the transport and geographical importance of the region. The eastern border is a possibility for the development of port work, fishing, tourism, foreign trade, concentration of production facilities and industries that rely on imported raw materials.
- About 74% of the annual import and export in the country pass through Burgas.







The crucial economic sectors of Burgas, are: tourism, chemical and petroleum processing industries, agriculture, food-processing, machine building, metallurgy and textile industry.

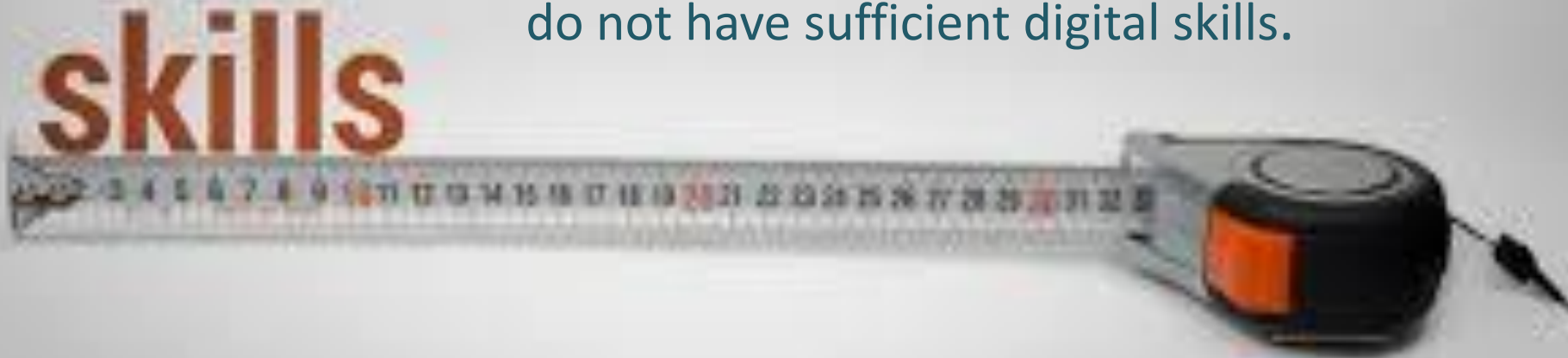


# Burgas District: educational structure of population aged 25 - 64 (2018)

Area	Higher Education	Secondary Education	Basic or Lower Education
Bulgaria	28,2	54,4	17,4
Burgas District	23,6	56,3	20,1

## The adult learning sector - requires lots of efforts from all stakeholders

- Least-developed sector in the common system of education and training;
- Low participation of adults in education and training;
- The number of people with low qualifications is almost twice bigger than the jobs offered to them;
- Most of the people with a medium level of qualification do not have sufficient digital skills.



# Key obstacles for inclusion in adult education

- Lack of support from the employer;
- Training often is not offered at close distance venues;
- Due to health problems or advanced age;
- Training is too expensive / they can't afford it;
- Lack of time due to work-related duties or organization of training at an inconvenient time.



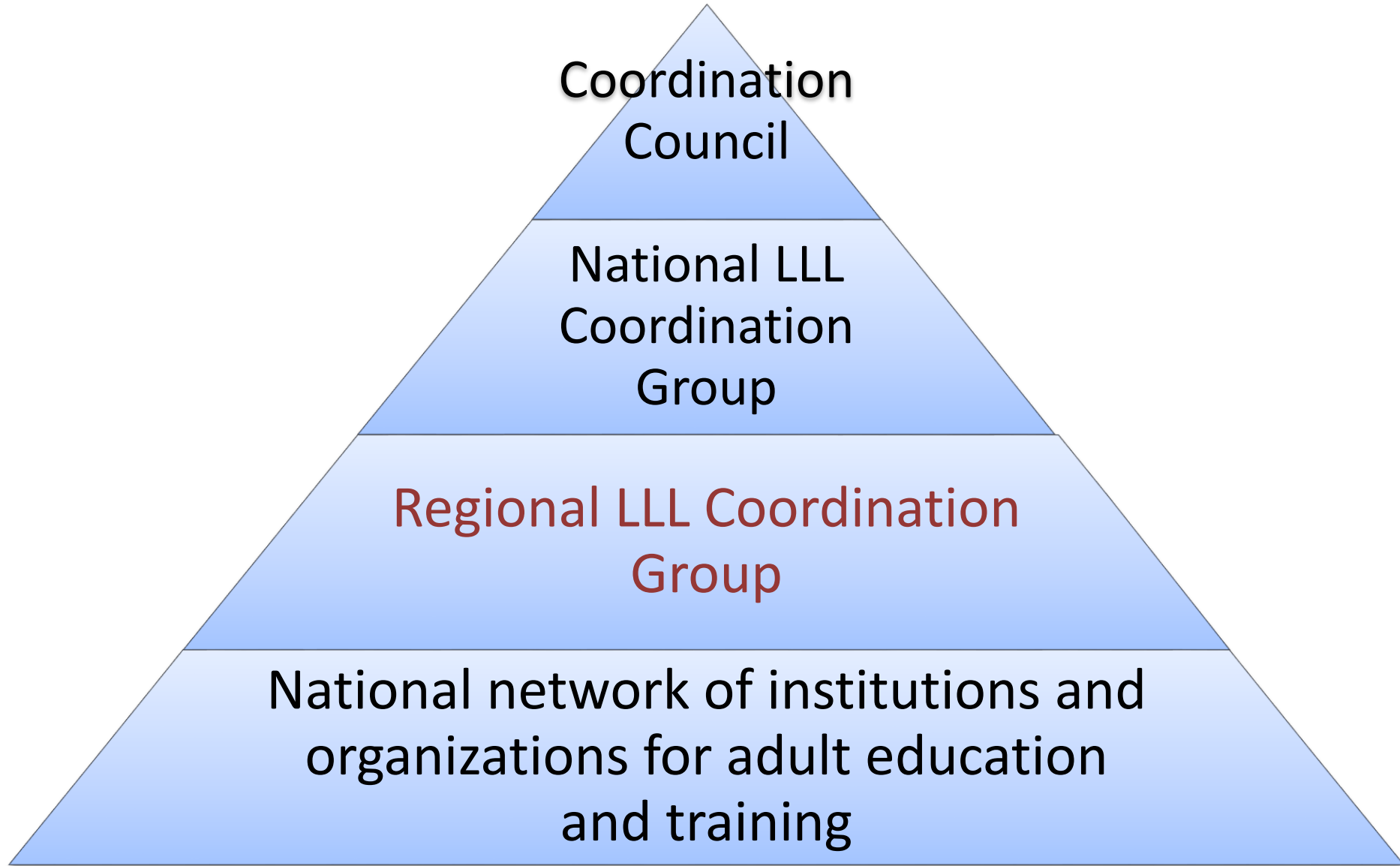


# Cooperation - a key factor for development of adult learning sector



# National platform "United for adult learning"

<http://lll.mon.bg>





# Regional Coordination Group - Burgas

- **Representatives of various stakeholders in the adult learning sector** - [http://lll.mon.bg/uploaded\\_files/okg-lll-Burgas-2.pdf](http://lll.mon.bg/uploaded_files/okg-lll-Burgas-2.pdf);

## Main activities:

Ensures the implementation of National LLL Strategy at the district level;

Promotes the policy in adult learning sector and initiates activities at regional level;

Provides conditions for exchange of good practices;

Assists for promotion of EPAL through ambassadors' network.

# Burgas District - the First Capital of Lifelong Learning in Bulgaria





# Meeting of the Regional Lifelong Learning Coordination Group

The experts discussed the approaches for updating the analytical tools for monitoring adult learning sector in Burgas district.

The National Program 2020-2030 aims to improve the indicators of the population aged 25 to 64 and to reduce the share of early school leavers. In this respect, the efforts of the coordination groups will focus on active dialogue and effective dissemination of good and inspiring practices.



# Analysis on Adult Learning sector at district level

[http://lll.mon.bg/uploaded\\_files/analiz-burgas.pdf](http://lll.mon.bg/uploaded_files/analiz-burgas.pdf)





# Trainings and skills recognition in Burgas District



<b>Unemployed persons</b> <i>(2020)</i>	<b>977</b>
<b>Literacy</b> <i>(2019-2020)</i>	<b>208</b>
<b>Validation</b> <i>(2018-2020)</i>	<b>83</b>

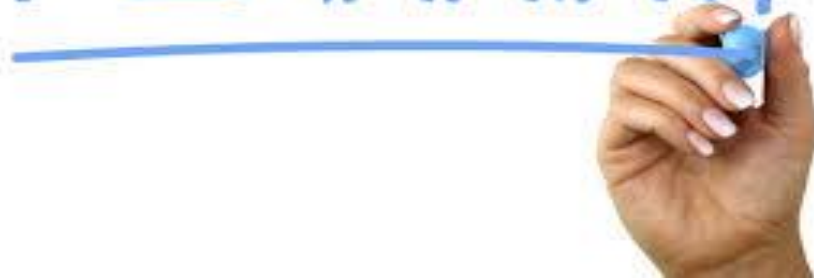
# Future intentions



# Priority measures planned

- Creation of functional “one-stop-shop” online portal for adult education, training and career guidance;
- Development and widening the system for career guidance for adults – skills development and career planning;
- Promoting lifelong learning among all segments of the population as a factor for personal development, sustainable employment and social inclusion.

PLANNING





# Saint Anastasia Island – the Island of EPALE



# See you soon!



Assoc. Prof., PhD, Sevdalina Turmanova  
email: [sturmanova@abv.bg](mailto:sturmanova@abv.bg)